



POLLUTION



CLIMATE CHANGE



LAND CONVERSION



INADEQUATE LAND USE PLANNING



OVER- AND DESTRUCTIVE EXPLOITATION

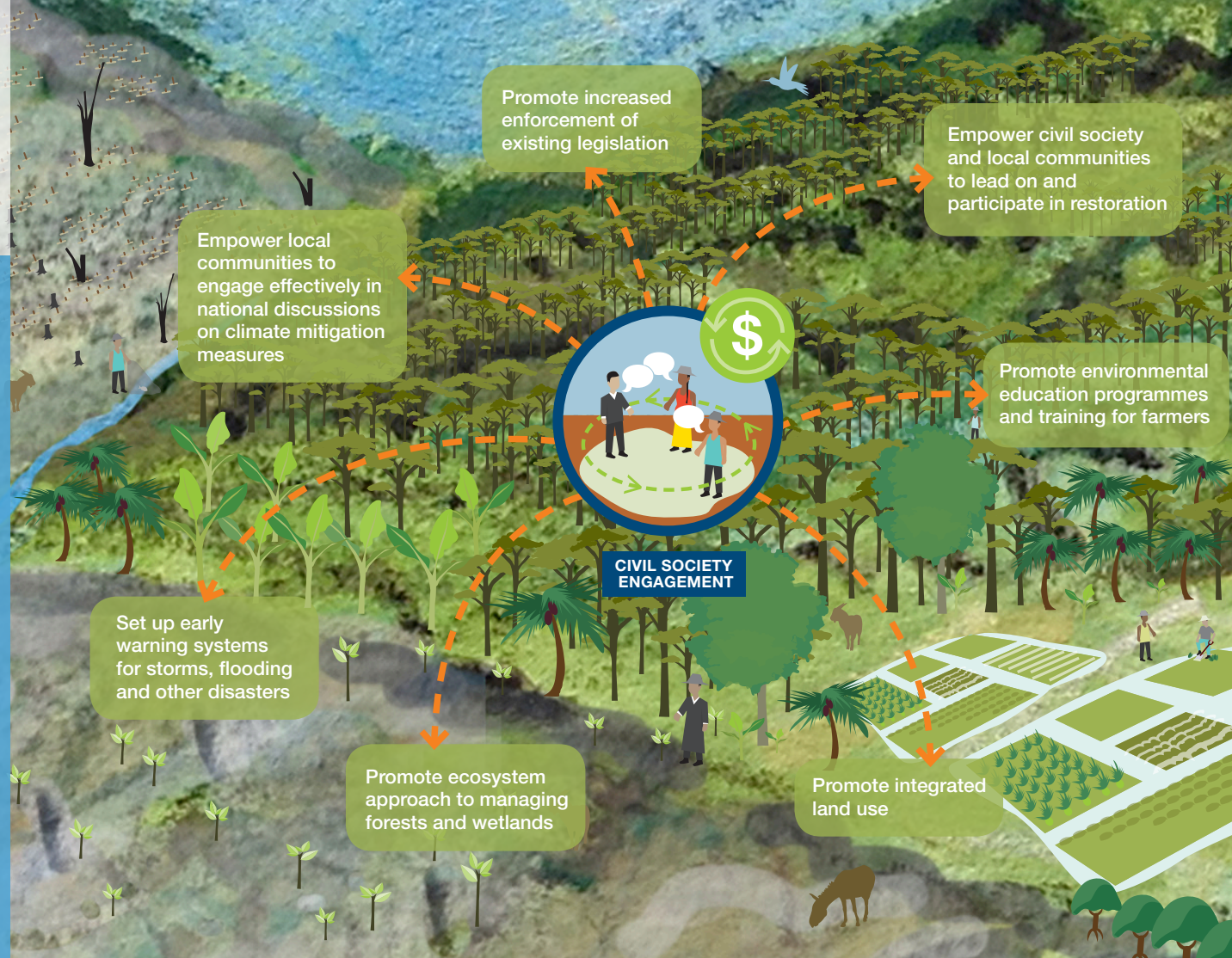
Restoration of **natural capital**

Restoring nature's innate ability to support all living things

Restoration of natural capital, which improves the flow of ecosystem goods and services in degraded environments, is a cost-effective and essential tool for restoring security on a range of basic human needs such as clean water, food, energy and income.

PROBLEMS

- Climate change brings more frequent and destructive storms
- Uncontrolled fires make land more susceptible to erosion
- Unsustainable land use reduces soil nutrient content
- Land conversion for roads, mining and commercial crops and livestock leads to deforestation
- Local voices not heard in relevant decision making processes



RESULTS

- Increased human adaptive capacity
- Disaster risk reduction
- Livelihood and food security
- Sustainable water management
- Carbon sequestration
- Community empowerment
- Enhanced biodiversity



SUSTAINABLE DEVELOPMENT



THRIVING ECONOMIES



IMPROVED LIVELIHOODS



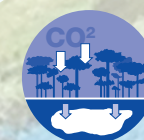
FOOD SECURITY



WATER SECURITY



HEALTHY BIODIVERSITY



CLIMATE RESILIENCE